

The Brookhaven

All the **COMFORTS** of
HOME—Inside and Out

2,398 square feet
3 bedrooms plus flex room
3 baths

You're going to love spending moonlit evenings on the Brookhaven's big, airy porch, stretching virtually across the entire front of the house. Inside, the living is just as sweet with a huge vaulted family room opening to a spacious dining room. The roomy master suite features an oversized walk-in closet and lavish bath with corner shower, double vanity and relaxing garden tub.

Option A



Option B

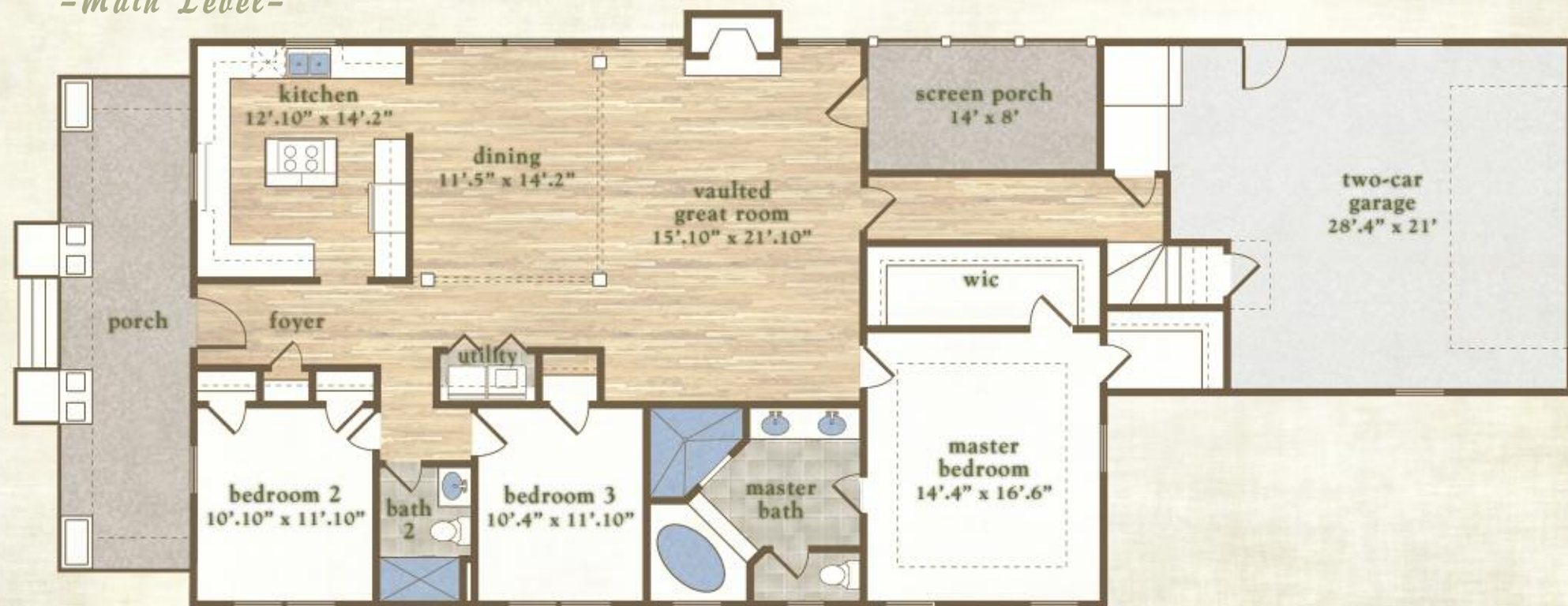


Option C

Floor PLAN

"Capturing the spirit of
the venerable Arts &
Crafts traditions..."

-Main Level-



-Flex Level-



This floor plan illustrates a general plan which is subject to future change and revisions. Dimensions, boundaries and position locations are for illustrative purposes only and are not necessarily intended to be exact.