

The Sunset Park

The **PERFECT** Blend of
CLASSIC and
Contemporary DESIGN

2,280 square feet
3 bedrooms plus flex room
3 baths

You'll be impressed with the custom-home features and handcrafted detailing built into the Sunset Park. This attractive home offers a generous family room with tray ceiling, a formal dining room, climate-controlled storage and a kitchen designed for those who love to cook. Add to that a huge front porch that stretches almost completely across the front of the house.

Option A



Option B



Option C



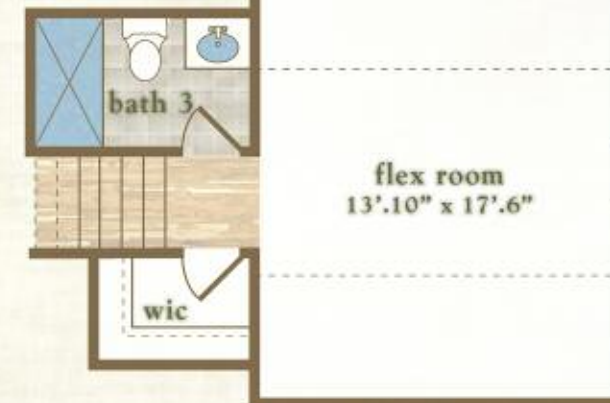
Floor PLAN

"...fine craftsmanship
and good design."

-Main Level-



-Flex Level-



This floor plan illustrates a general plan which is subject to future change and revisions. Dimensions, boundaries and position locations are for illustrative purposes only and are not necessarily intended to be exact.