

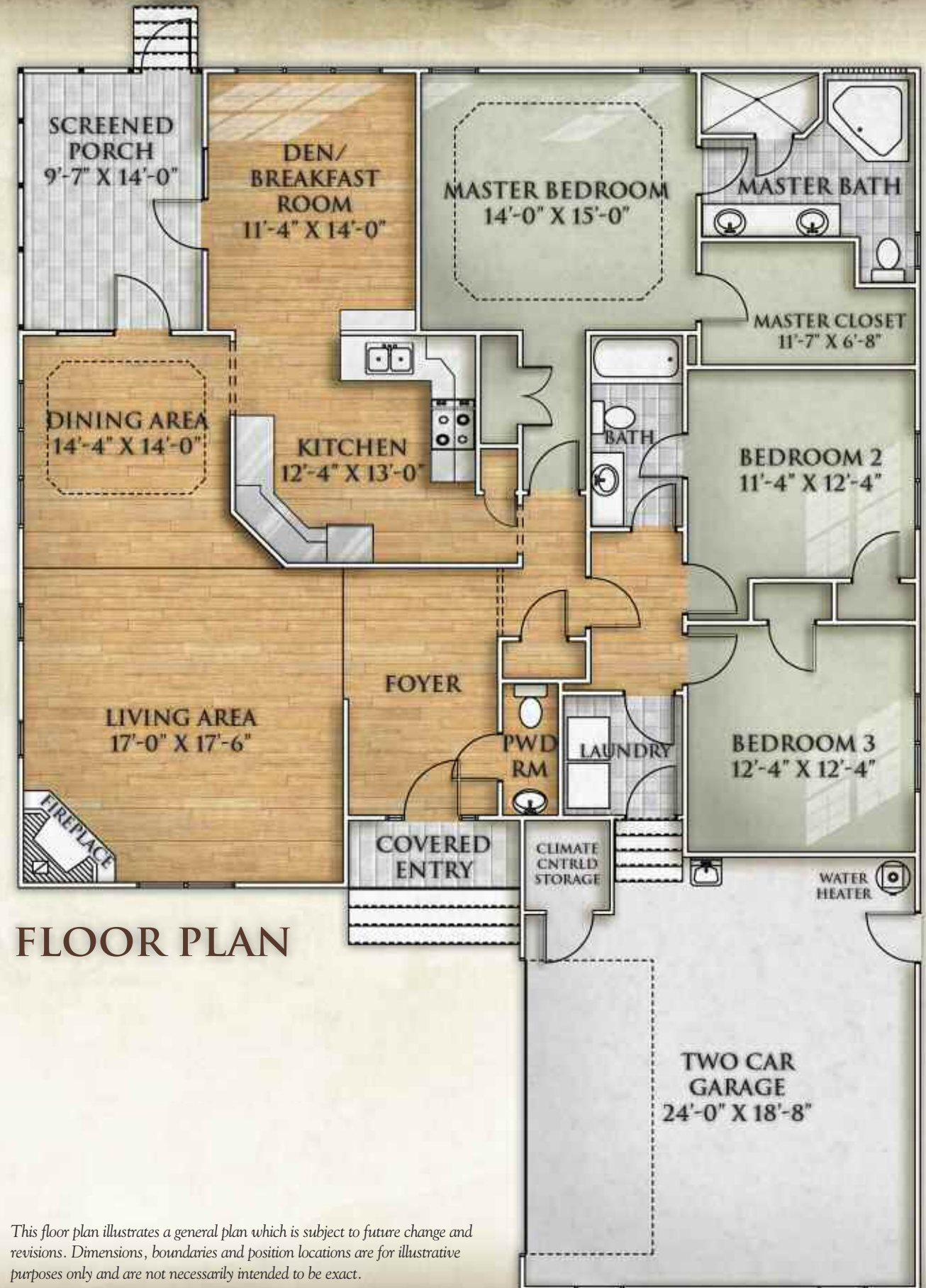
THE ESSEX

2,000 Square Feet / 3 Bedrooms / 2.5 Baths / Screened Porch



A FLOOR PLAN *Ideal for YOU* *and YOUR GUESTS*

This wonderful floor plan makes living easy for you and your guests. A high ceiling foyer next to a powder room flanks a broad living area with fireplace leading to a dining area and a screened porch. The porch also opens onto a den/breakfast room served by the large, open kitchen. The spacious master bedroom, bath and large walk-in closet adjoin bedrooms two and three. Climate controlled storage just off the two-car garage completes this very well-suited layout.



This floor plan illustrates a general plan which is subject to future change and revisions. Dimensions, boundaries and position locations are for illustrative purposes only and are not necessarily intended to be exact.